

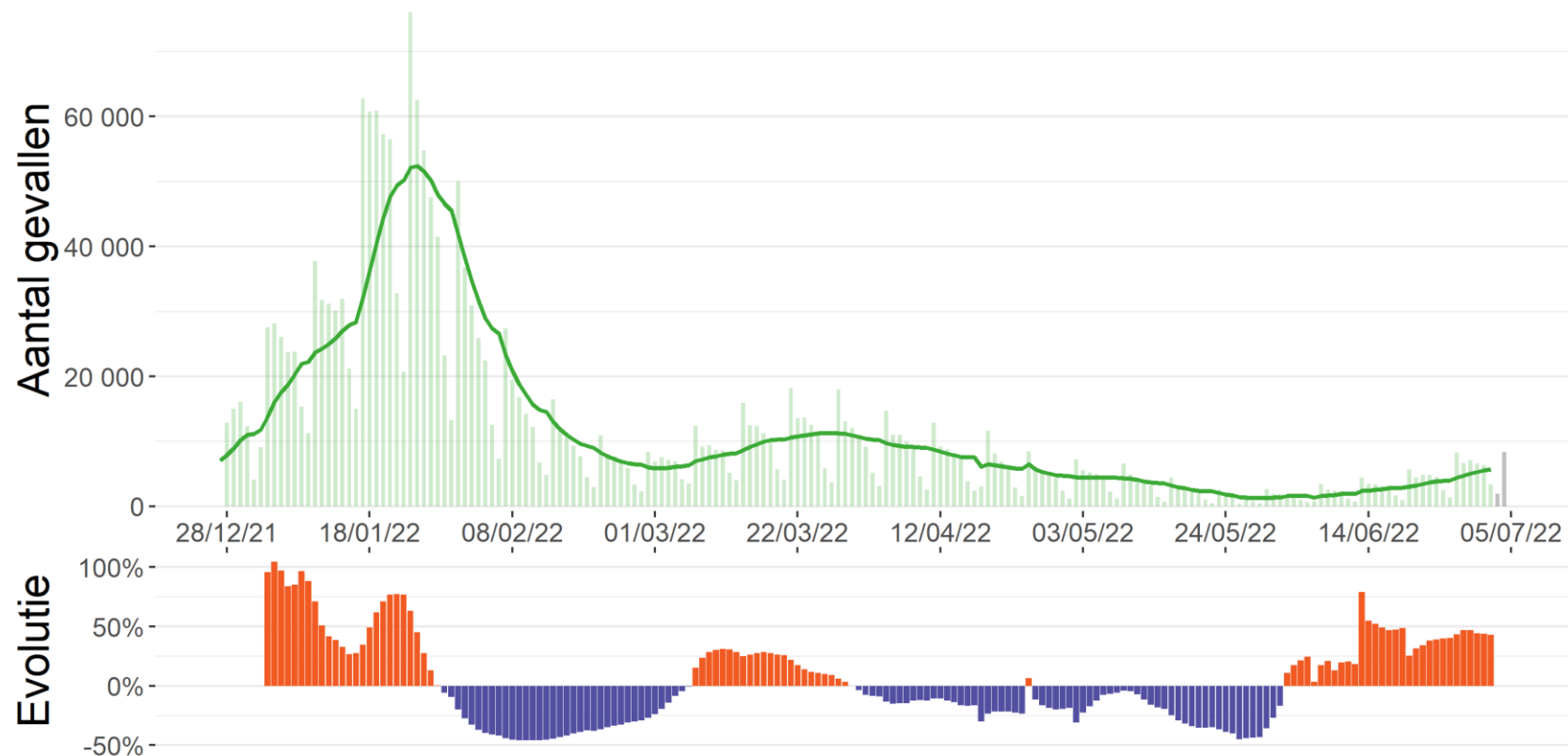
Risicoanalyse en beheersstrategie SARS-Cov-2

Prof. Dr. Dirk Ramaekers – inleiding Webinar

Hoe gaan we om met de snelle stijging van Covid-19 besmettingen

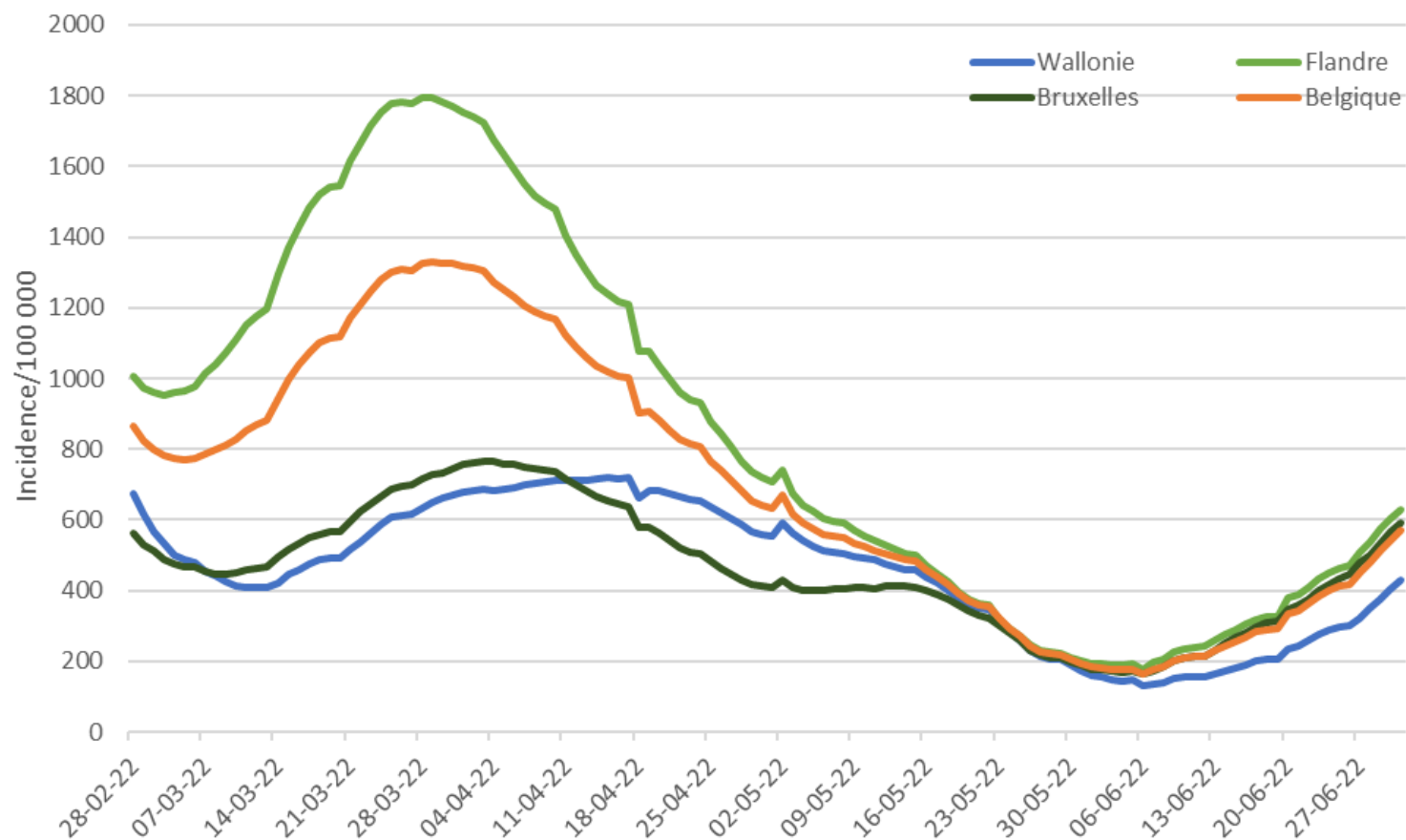
1. Epidemiologische situatie (5/7/2022)

Evolutie van het totaal aantal nieuwe bevestigde besmettingen in België, sedert 27/12/21

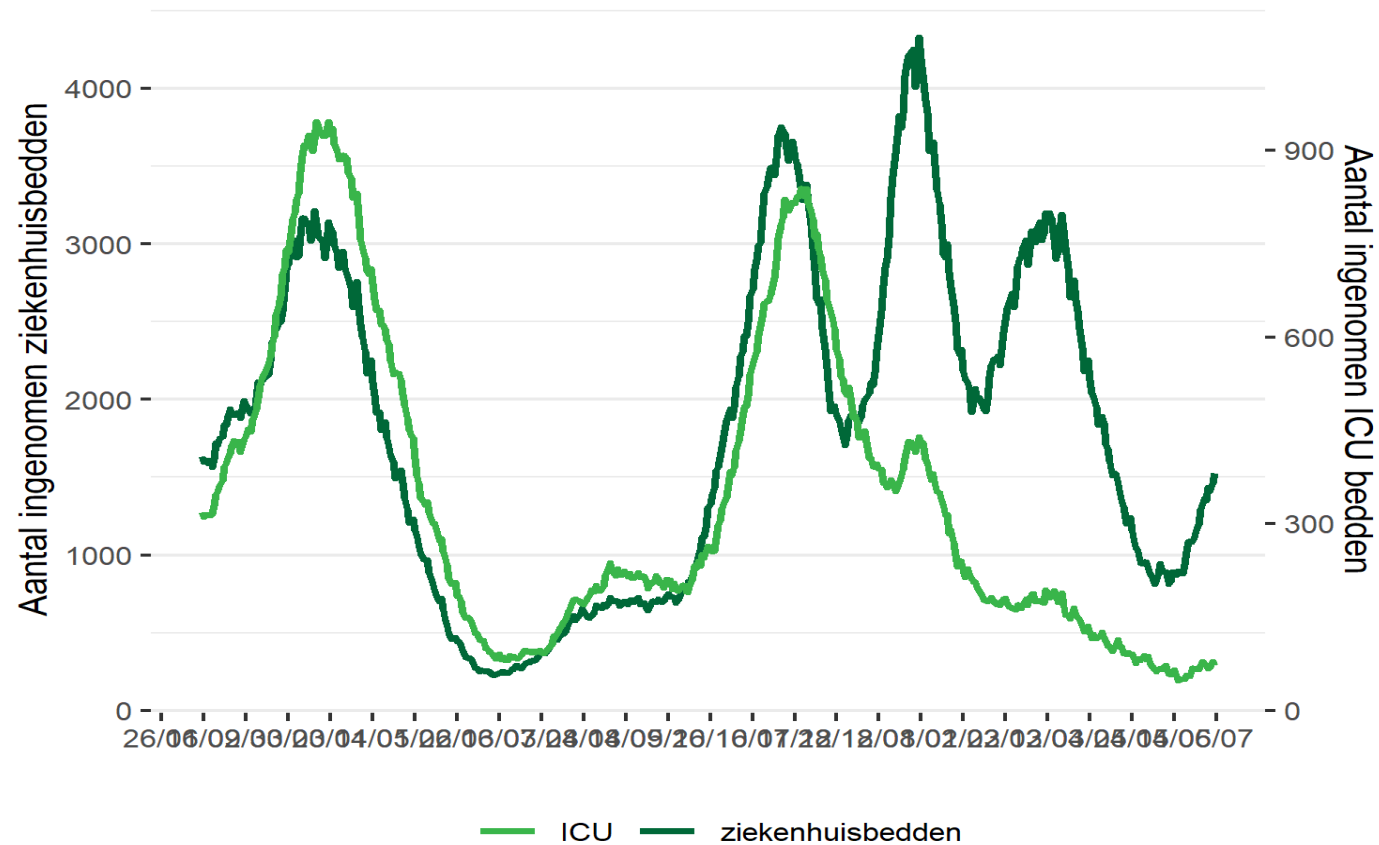


- 26/06-02/07: 5 669 (compared to 3 962, +43%)
- Rt: 1,233 (compared to 1,237)

Incidence cumulée sur 14 jours pour 100 000, Belgique et par région, depuis 28/02/2022



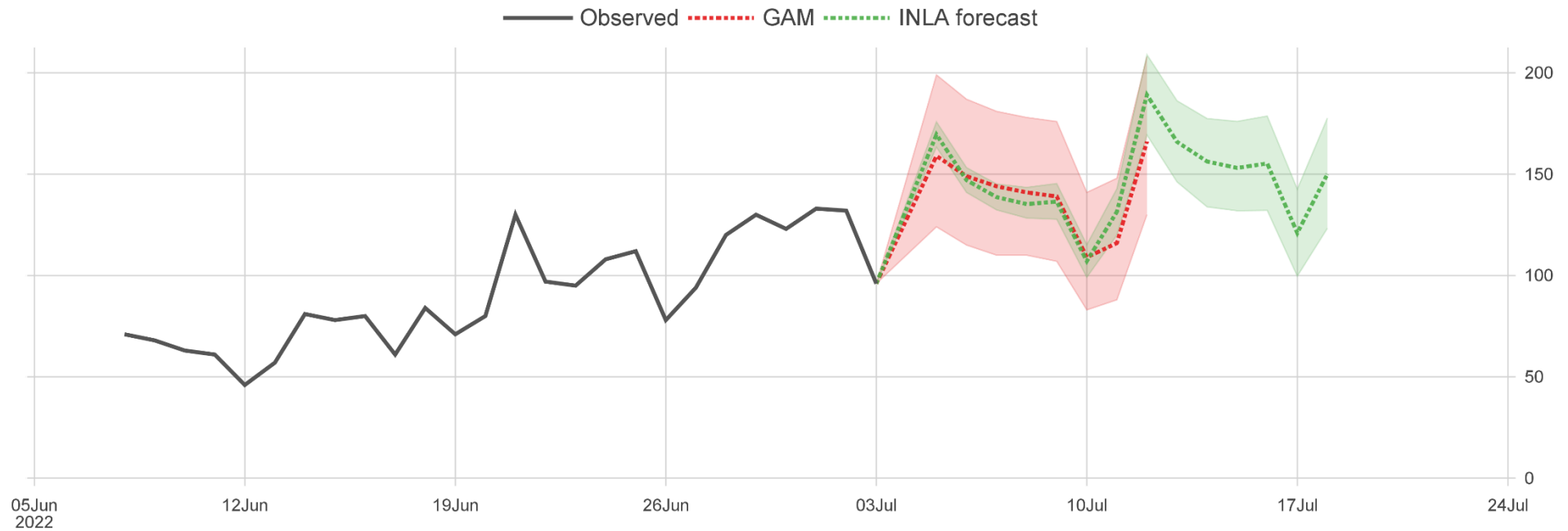
Aantal ingenomen bedden in het ziekenhuis en op ICU, 15/02/2021 - 05/07/2022



- Beds occupied: 1 537 (+16%)
- ICU beds occupied: 84 (+6%)

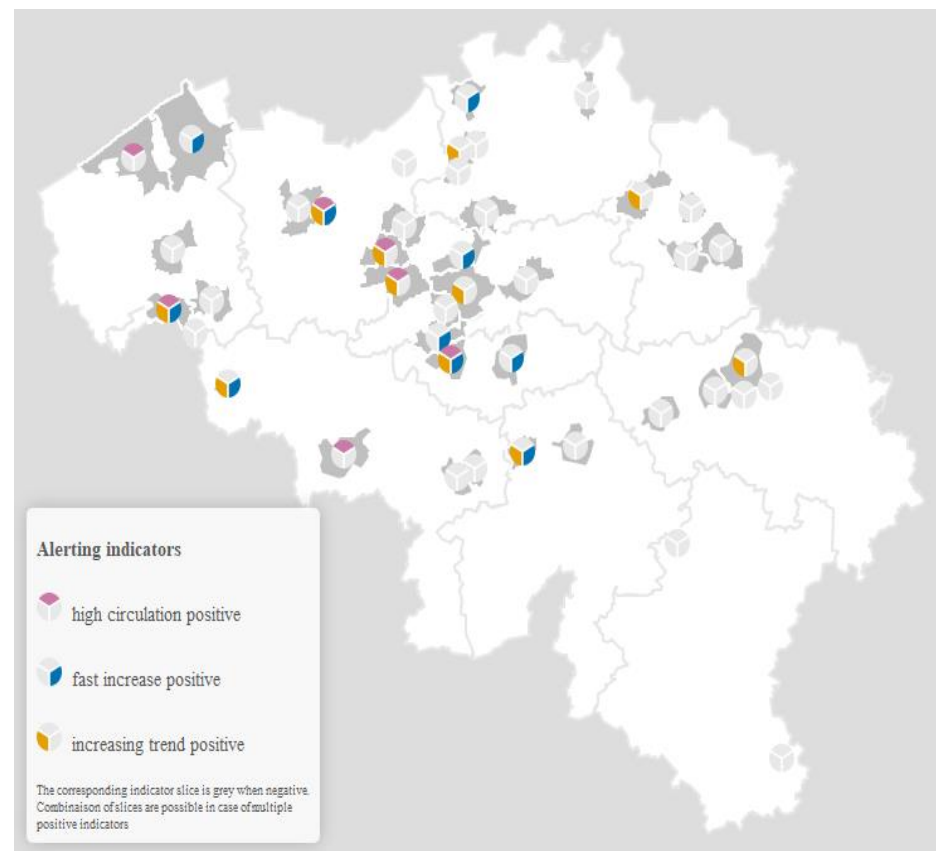
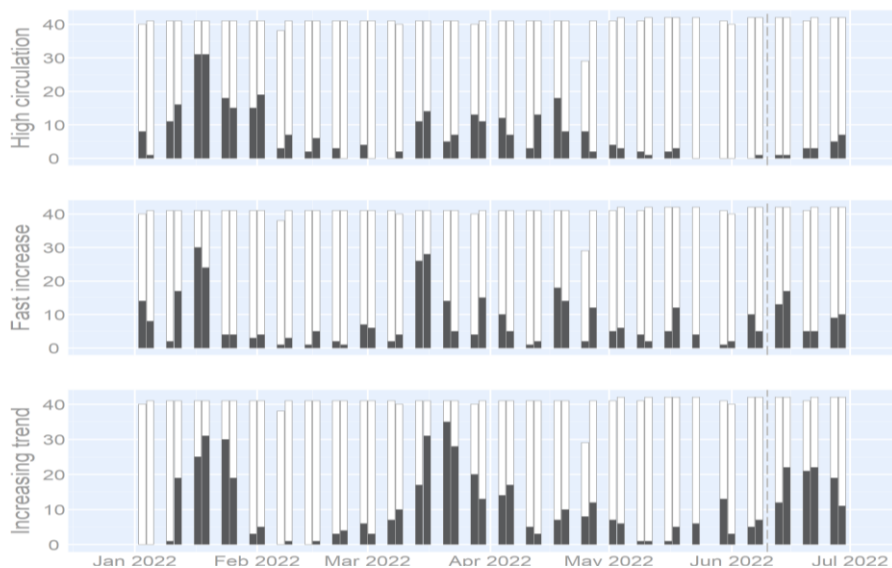
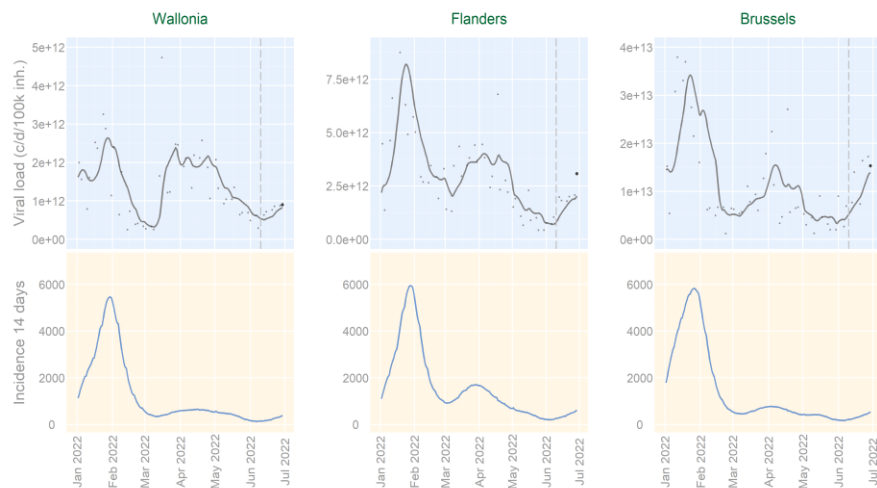
Evolution et prédiction du nombre de nouvelles admissions à l'hôpital

Short-Term Prediction Models



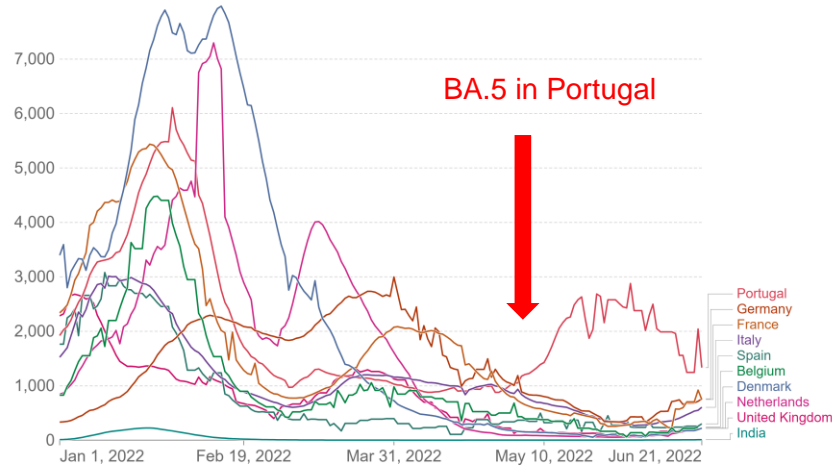
Created on 2022-07-05

Evolution du nb de stations d'épuration avec une alerte (depuis 02/2022) et évolution de la charge virale par région (depuis 02/2021)



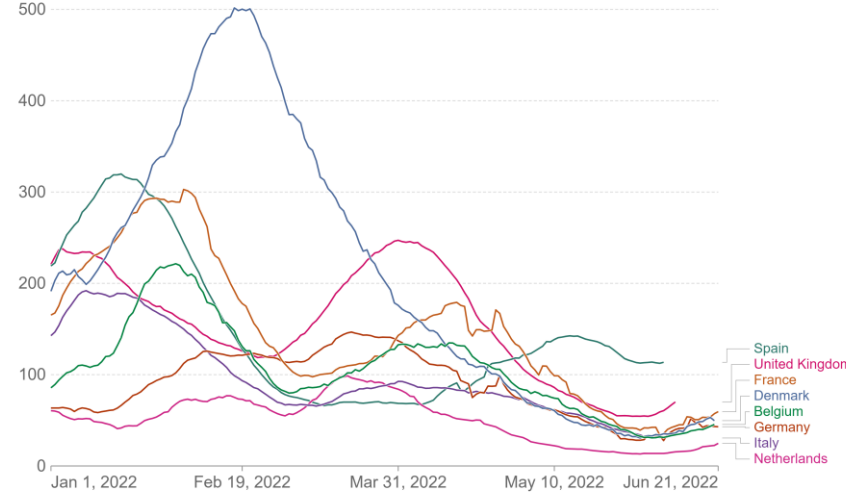
Benchmark curves

Daily new confirmed COVID-19 cases per million people
7-day rolling average. Due to limited testing, the number of confirmed cases is lower than the true number of infections.



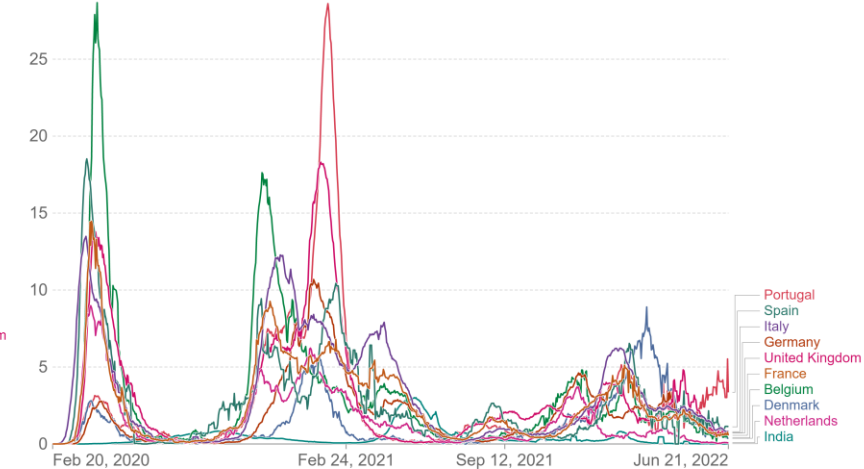
Source: Johns Hopkins University CSSE COVID-19 Data

Weekly new hospital admissions for COVID-19 per million people
Weekly admissions refer to the cumulative number of new admissions over the previous week.



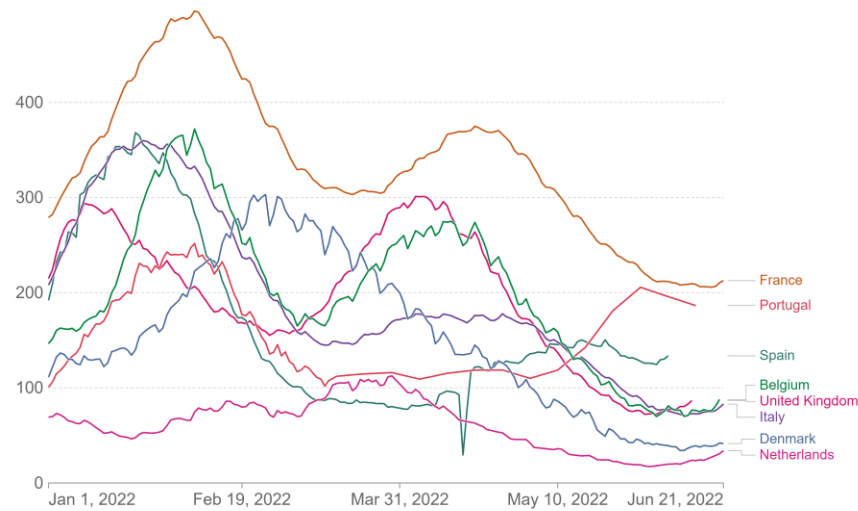
CC BY Source: Official data collated by Our World in Data

Daily new confirmed COVID-19 deaths per million people
7-day rolling average. Due to varying protocols and challenges in the attribution of the cause of death, the number of confirmed deaths may not accurately represent the true number of deaths caused by COVID-19.



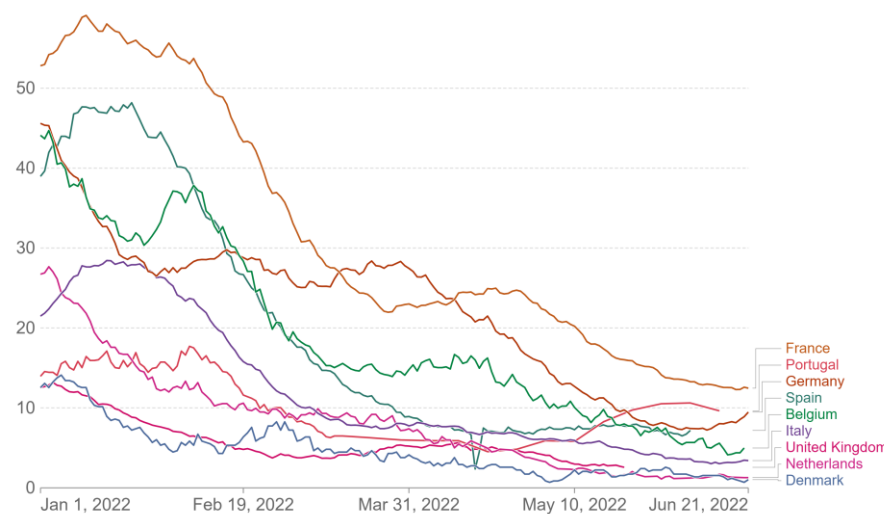
CC BY Source: Johns Hopkins University CSSE COVID-19 Data

Number of COVID-19 patients in hospital per million people

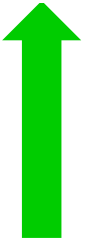


Source: Official data collated by Our World in Data

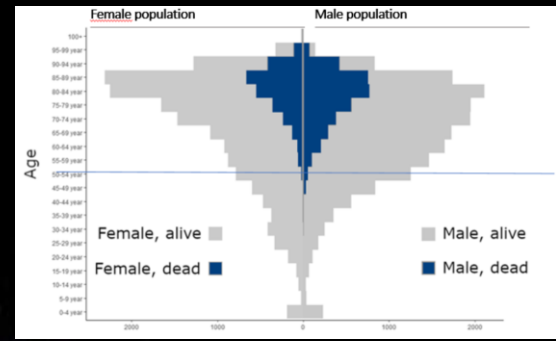
Number of COVID-19 patients in intensive care (ICU) per million people



Source: Official data collated by Our World in Data
Note: For countries where the number of ICU patients is not reported, we display the closest metric (patients ventilated or in critical condition).



Beheerstrategie SARS-CoV-2



Profylactische vaccinatie

(ernstige ziekte, hospitalisatie,
overlijden)

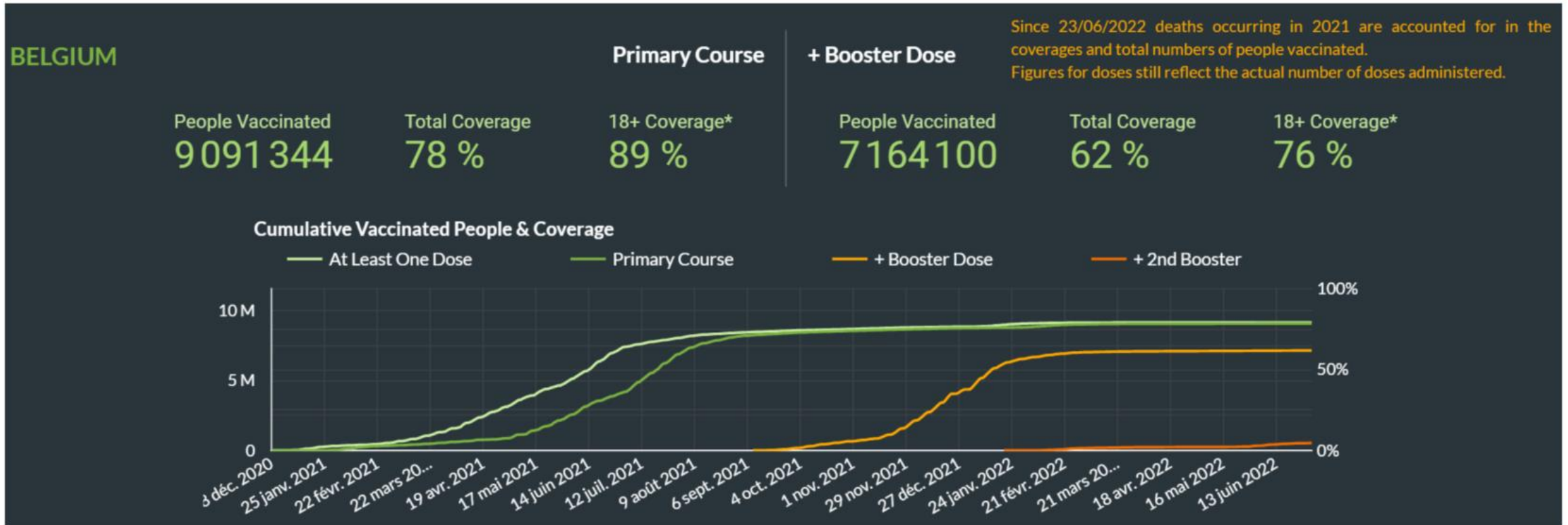
Viruscirculatie ↓

- NPI's: mondkmaskers
- NPI's: Luchtkwaliteit
- Outbreak management
 - Reizigersbeleid
 - Barometer

...

COVID- therapeutics

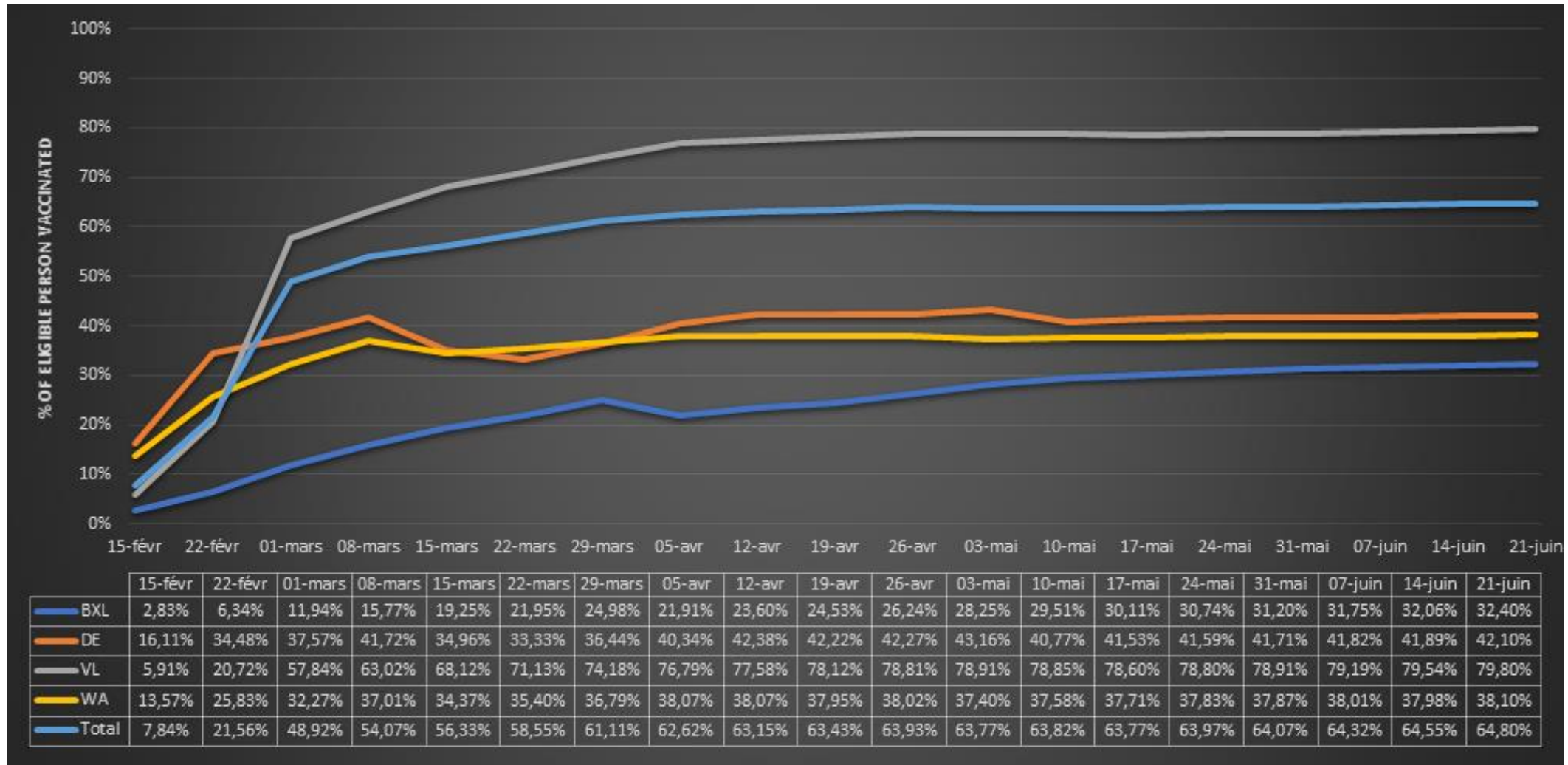
Vaccination coverage over time



Evolution since last week

1st doses	Fully-vaccinated	Booster	2 nd booster
+ 502	+ 453	+ 4.895	+ 19.757

Vaccination coverage Immunocompromised



Samenvatting

1. Vaccinatiebeleid (TF/IMC)

- herinneringsbrief 4^e prik (2^e booster) voor de immuungecompromitteerden
- Intensifiëring campagne voor 2^e booster voor residenten WZC en 80-plussers: informeren/sensibiliseren
- Communicatie over het belang van volledige vaccinatie en 1^e booster voor familie en nauwe contacten met kwetsbare personen
- Communicatie over persisterende werkzaamheid originele mRNA vaccins
- Sensibilisatie 1^e lijn en en ziekenhuisspecialisten (inclusief immuungecompromitteerden met lage immuunrespons Evusheld); patiëntenverenigingen,...

2. Maximale preventie in levensstijl

- Ventilatie-optimalisatie in woning, werk, bijeenkomsten, evenals in instellingen zoals woonzorgcentra
- FFP2-masker dragen op openbaar vervoer en bij contact met grote aantallen mensen is sterk aanbevolen voor risicopersonen
- Laagdrempelig testen van patiënt én omgeving; thuisblijven bij symptomen voor iedereen; consequent toepassen 7 dagen isolatie en 3 dagen mondkmasker
- Thuiswerk en het vermijden van veel contacten is aanbevolen tijdens een nieuwe golf

3. Verhoging zorgcapaciteit

